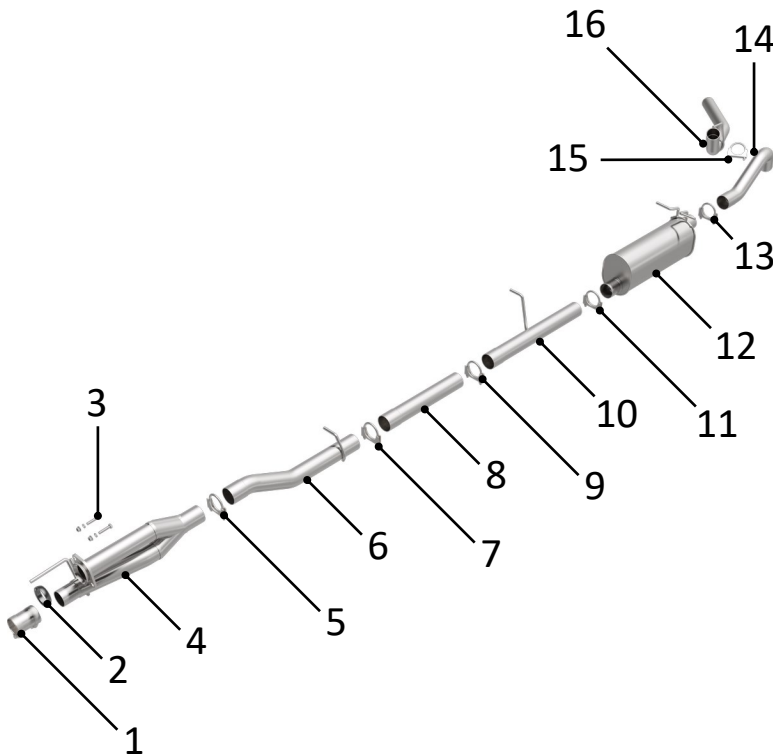


# BRExhaust™

A **MAGNAFLOW** GROUP COMPANY

## INSTALLATION INSTRUCTIONS | PART NO. 106-0522



### WARNING:

When working on, under, or around any vehicle exercise caution. Please allow the vehicle's exhaust system to cool before removal, as exhaust temperatures may cause severe burns. If working without a lift, always consult vehicle manual for correct lifting specifications. Always wear safety glasses and ensure a safe work area. Serious injury or death could occur if safety measures are not followed.

**STEP 1:** (Carefully read all instructions before installation) Disconnect the vehicle's battery before removal of the OEM exhaust system. This will prevent electrical accidents and will reset the computer if it applies to the vehicle. Remove existing exhaust system from the vehicle. Only remove parts that will be replaced. Clean existing flange with a wire brush to ensure proper sealing.

**STEP 2:** Attach **[4] Inlet Pipe Assembly** to existing isolator and exhaust with supplied **[1] Clamp**, **[2] Gasket**, and **[3] Hardware**.

#### STEP 3:

Attach front **[6] Intermediate Pipe Assembly** to existing isolator and **[4] Inlet Pipe Assembly** with supplied **[5] Clamp**.

#### STEP 4:

For Crew Cab Short Bed and Extended Cab Long Bed vehicles attach rear **[10] Intermediate Pipe Assembly** to existing isolator and front **[6] Intermediate Pipe Assembly** with supplied **[9] Clamp**.

For Crew Cab Long Bed vehicles attach **[8] Intermediate Pipe** to **[6] Intermediate Pipe Assembly** with supplied **[7] Clamp** then attach rear **[10] Intermediate Pipe Assembly** to existing isolator and **[8] Intermediate Pipe** with supplied **[9] Clamp**.

**STEP 5:** Attach **[12] Muffler Assembly** to existing isolators and rear **[10] Intermediate Pipe Assembly** with supplied **[11] Clamp**.

**STEP 6:** Attach **[14] Over-Axle Pipe** to **[12] Muffler Assembly** with supplied **[13] Clamp**.

**STEP 7:** Attach **[16] Tailpipe Assembly** to existing isolator and **[14] Over-Axle Pipe** with supplied **[15] Clamp**.

**STEP 8:** Ensure new exhaust is not contacting any portion of the underbody of the vehicle or drivetrain.

**STEP 9:** Tighten all clamps and bolts starting from rear of the vehicle. **(DO NOT EXCEED 30FT-LB WHEN TIGHTENING CLAMP AND CHECK ALL CLAMPS AFTER 50 MILES. RETIGHTEN IF NECESSARY)**



**BRExhaust** recommends  
professional installation  
for all products

**Technical Support: 1-800-631-7271**

**BRExhaust — 1901 Corporate Ctr, Oceanside, CA 92056**

**www.brexhaust.com**